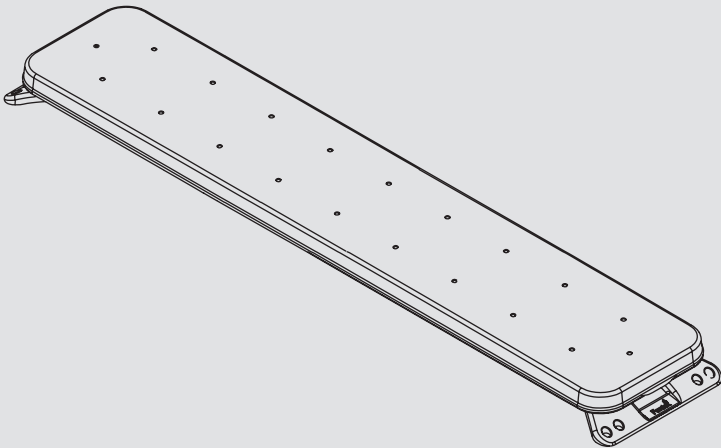


Apollo & Cobra Light Bar Instruction Manual

V.3



APOLLO COBRA

Model # - L-4910, L-4950,
L-6010, L-6050

This instruction manual serves as a guide for the **Apollo Cobra Lightbar**.

IMPORTANT! Please read through all provided instructions and any listed warnings in regards to product use.



Fenix Product Copyrights This price List and the mentioned Fenix products include or describe copyrighted Fenix material. Laws in the United States and other countries preserve for Fenix Industries and its licensors certain exclusive rights for copyrighted material, including the exclusive right to copy, reproduce in any form, distribute and make derivative works of the copyrighted material. Accordingly, any copyrighted material of Fenix and its licensors contained herein or in the Fenix products described in this Price List may not be copied, reproduced, distributed, merged or modified, transmitted, transcribed, stored in retrieval system or translated into any language or computer language, in any form or by any means, without prior written permission of Fenix Industries, Inc.. Fenix and the stylized Fenix logo are registered in the U.S. Patent & Trademark Office.

Safety Regulations	3
Warranty	3
Service after Expiration.....	3
Copyright	3
Feniex Product Copyright.....	3
Equipment Dimensions	4
Features & Specifications	5
Wiring Diagram	
Cobra™ & Apollo™ Single Color.....	6
Electrical Installation	7
Replacing Modules	
Cobra™.....	8
Apollo™.....	9
Installing Brackets	10
Flash Pattern List	11

Safety Regulations

The following provides all the information necessary to safely operate the previously listed products of Feniex Industries, Inc. Please read this manual thoroughly before installing or operating your new product in order to prevent any damage or injury. Failure to follow the listed instructions in this manual may result in damage to your products or personal injury.

- Proper installation of this product requires good knowledge of automotive systems, electronics and procedures.
- Please guarantee all vital components of the vehicle are not in danger of being damaged by drilling holes necessary for installation. Check all sides of the mounting surface before drilling any holes into the vehicle.
- Do not install this product in any way that interferes with the deployment of the air bag. Doing so may damage the effectiveness of the air bag and can lead to serious personal and vehicle injury. The installer will assume full responsibility of proper installation of the new unit.
- Please clean the mounting surface before installation of the unit when using tape, brackets, magnet, Velcro or suction cups.
- The product's ground wire must be connected directly to the Negative (-) battery post for effective use of the unit. Please follow all wiring guidelines provided to guarantee long lifespan and productivity. Failing to follow these instructions may result in damage to the product.

Warranty

Feniex Industries, Inc. warrants to the original purchaser that the product shall be free from defects in material and workmanship for sixty (60) months from the date of purchase for all LED products. Feniex Industries warranties speakers, sirens and controllers for 24 months; switches and flashers for 12 months.

If a warranty problem occurs, please contact customer support at 1.800.615.8350 or visit the web site at www.Feniex.com. If the product needs to be returned for repair or replacement, call our customer support line to receive a return merchandise authorization number.

Operational times are from 10 a.m. to 5 p.m. central time, Monday through Friday. Please do not send in product without contacting support first for a RMA number.

Service After Expiration

Feniex Industries will still provide service for all products after expiration of the warranty. For any issues, call the customer support line. In some instances it may be necessary for the product to be shipped, freight prepaid and insured for loss or damage to Feniex headquarters.

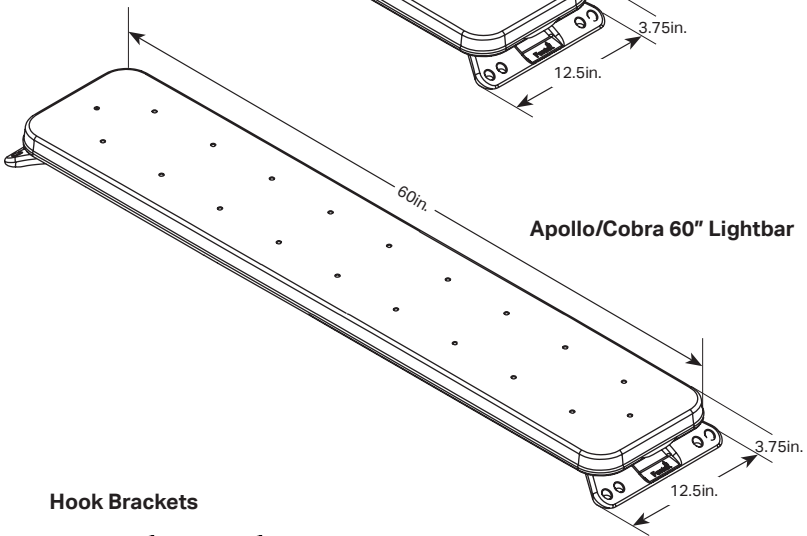
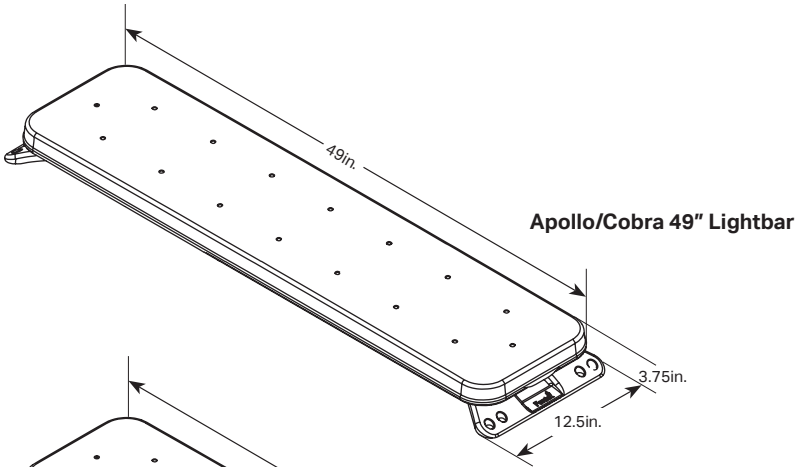
Warning! Utilizing non-factory screws and mounting brackets may result in loss of warranty coverage.

Copyright

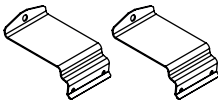
This instruction manual and the Feniex products described in this instruction manual may include or describe copyrighted Feniex material. Laws in the United States and other countries preserve for Feniex Industries and its licensors certain exclusive rights for copyrighted material, including the exclusive right to copy, reproduce in any form, distribute and make derivative works of the copyrighted material. Accordingly, any copyrighted material of Feniex and its licensors contained herein or in the Feniex products described in this instruction manual may not be copied, reproduced, distributed, merged or modified in any manner without the express written permission of Feniex Industries, Inc.

Feniex Product Copyrights

The products described in this document are the property of Feniex Industries, Inc. It is furnished by express license agreement only and may be used only in accordance with the terms of such an agreement. Products and documentation are copyrighted materials. Making unauthorized copies is prohibited by law. No part of the product or documentation may be reproduced, transmitted, transcribed, stored in retrieval system or translated into any language or computer language, in any form or by any means, without prior permission from Feniex Industries, Inc.



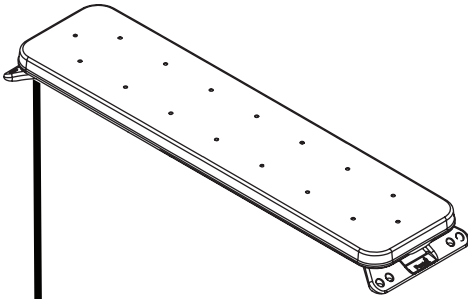
Hook Brackets



Please Note! Hook kit purchased separately

Operating Voltage:	10-15V Reverse Polarity Protection <ul style="list-style-type: none"> • A 24V to 12V step down converter is required for 24V applications.
Flashing Current Draw:	15 Amp
Available Colors:	Red, Amber, White, Blue or Green <ul style="list-style-type: none"> • Order sheet available online. • For flash patterns, please refer to the flash pattern list available online. • Controller features pattern memory recall
Cobra Module Count:	22 modules (6 LEDs per module) = 132 total LEDs
Apollo Module Count:	34 modules (6 LEDs per module) = 204 total LEDs* <small>*Dual Color systems have 12 LEDs with 6 LED's that light up on each at a time.</small>
LED Type:	4 watt high power
Lengths:	49" 60"
Functions:	
Center Out:	To engage, connect the left wire and the right arrow wire together.
Cruise Mode:	Engages corners at 10% full brightness potential.
Dim Mode:	Dims full bar at 10% full brightness potential.
Arrow Flashing Mode:	Pattern displayed from Mode selected.
Alley Flashing Mode:	Pattern displayed from Mode 3 selection.
Requirements:	External 40 Amp fuse is required on the Red +12 AWG wire.
Internal Controller Board:	Controller board is programmed to customer build requirements. If the end user requires serviceability, please contact Feniex for assistance.
Reverse Polarity Protection:	The light bar controller has built-in reverse polarity circuit. This will protect the controller in the event the user reverse connects the 12V (+) and 12V (-) inputs.

*Dual Color systems have a total of 12 LEDs with 6 LED's that light up on each at a time.



Overrides:

Mode 2 will override Mode 1. Mode 3 will override Modes 1 and 2.

Takedown Steady and Alley Steady functions override Takedown Flashing and Alley Flashing.

Apollo/Cobra System Specifications:

Wire Color:	Apollo Function:	Cobra Function:	Function Description:
Black	Mode 1 (12V-)	Mode 1 (12V-)	
Red	Mode 2 (12V+)	Mode 2 (12V+)	Overrides Mode 1
Orange	Mode 3	Mode 3	Overrides Mode 1 and Mode 2
Green	Cruise Mode	Cruise Mode	Activates side modules at 10% brightness
Blue	Takedown	Takedown	Overrides Flashing
White	Left Alley	Left Alley	Overrides Alley Flashing
Red/Black	Right Alley	Right Alley	Overrides Alley Flashing
Orange/Black	Takedown/ Alley Flashing	Takedown/ Alley Flashing	Displays flash patterns from Mode 3
Green/Black	Flood	Arrow Flashing	Cycles through 5 flood flash patterns/displays/ turns on rear modules in a row position on flashing
Blue/Black	Dim	Dim	Dims bar to 10% brightness
White/Black	Arrow Left	Arrow Left	Overrides Arrow Flashing
Black/White	Arrow Right	Arrow Right	Overrides Arrow Flashing
Red/White	Pattern Changer	Pattern Changer	Cycles through 48 flash patterns
Green/White	Rear Cut Off	Rear Cut Off	Turns off all rear facing modules
Blue/White	Front Cut Off	Front Cut Off	Turns off all front facing modules

Please Note! To change flash patterns, momentarily tap the Red/White wire to the Red 12V (+) wire

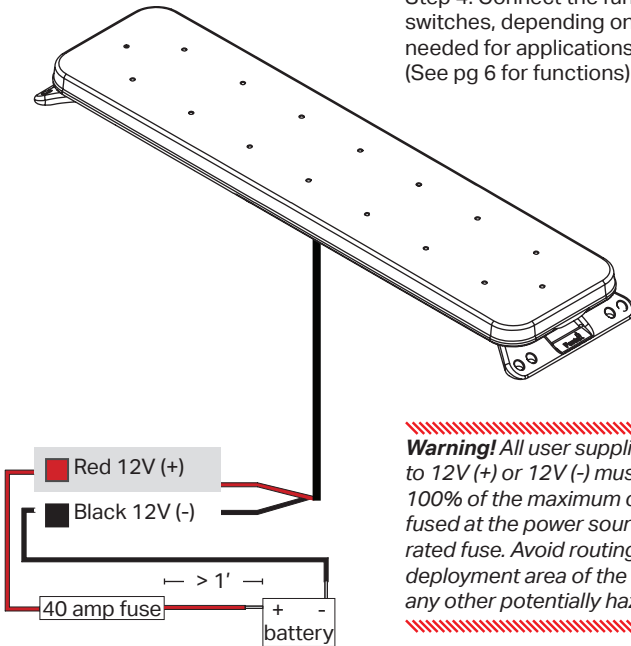
Power Cable Wiring:

Step 1: Install a 40 Amp fuse (customer supplied) to the end of the red, 12 AWG wire of the wire harness assembly. Do not use a circuit breaker or fusible link. Do not insert the fuse until the opposite end of the fuse holder is connected to the vehicle battery.

Step 2: Connect the opposite end of the fuse to the 12V (+) terminal of the battery. Do not use more than 1 foot of wire between the fuse and the battery terminal to ensure wire protection.

Step 3: Connect the Black, 12 AWG wire to the vehicle chassis ground.

Step 4: Connect the function wires to switches, depending on the functions needed for applications. (See pg 6 for functions)



Warning! All user supplied wires connecting to 12V (+) or 12V (-) must be sized to supply 100% of the maximum current and properly fused at the power source with the correctly rated fuse. Avoid routing wires in the deployment area of the vehicle air bag or any other potentially hazardous locations.

Installing a Hook Bracket

Step 1: Remove the 3" hex bolt from its packaging and slide the bolt through the hook bracket hole.

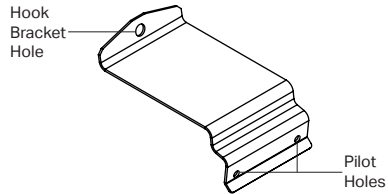
Step 2: Using an open wrench, secure the hook bracket to the foot bracket hole using the hex bolt. Repeat on the other side of the lightbar so both sides have the hook bracket secured.

Step 3: Place the lightbar with the attached hook brackets on the vehicle.

Step 4: Secure and tighten the bracket using an open wrench on each side of the vehicle until the bar is snugly mounted.

Important! Do not overtighten the hex bolts. Do not exceed 165 in. lb.

Ensure the vehicle's door will close without any interference.

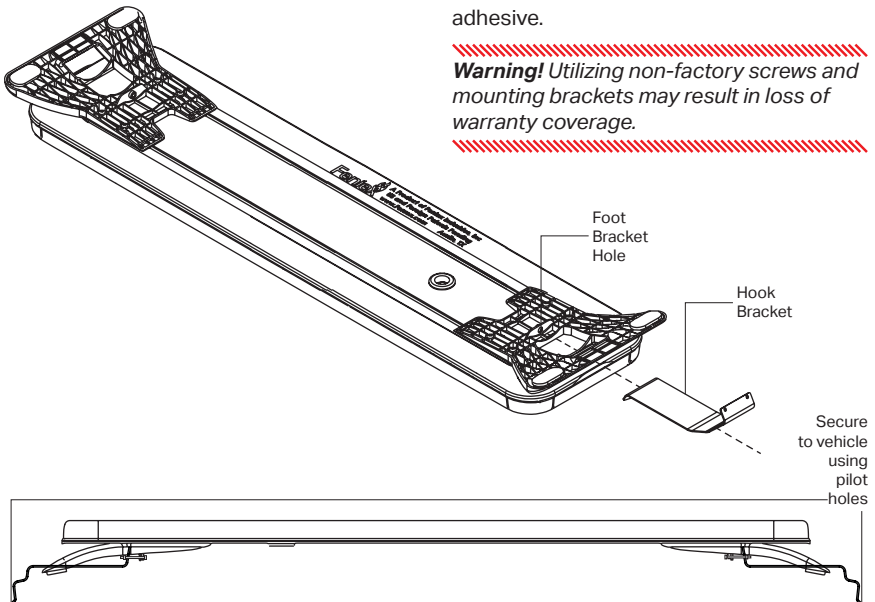


Important! Use the "Hook Kit Compatibility Chart" for more information online.

Step 5: Drill and secure the bracket to the vehicle using the two pilot holes on the bottom of the hook bracket.

Step 6: Once secure, drill a one inch hole to route the wire harness through the vehicle and then seal the hole with a silicone adhesive.

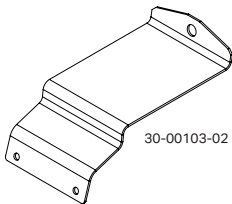
Warning! Utilizing non-factory screws and mounting brackets may result in loss of warranty coverage.



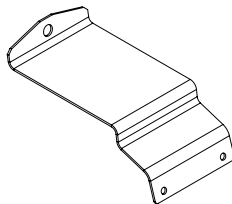
Hook Kit Compatibility Sheet

Name: **Driver Side:** **Passenger Side:**

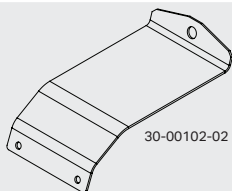
FT11
Chevy Tahoe



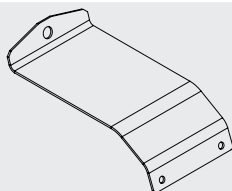
30-00103-02



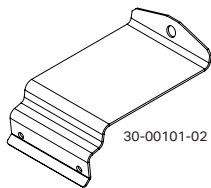
FT04
Dodge Durango



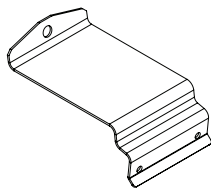
30-00102-02



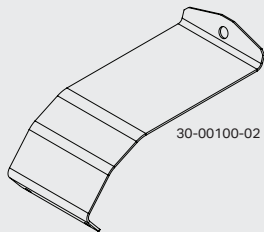
FT05
Ford Crown Victoria



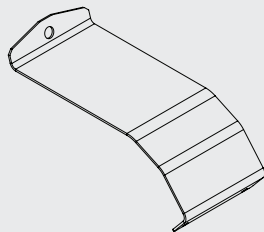
30-00101-02



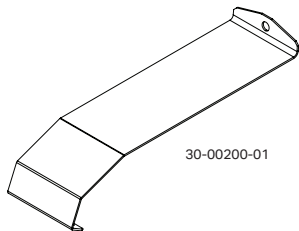
FT17
Dodge Charger



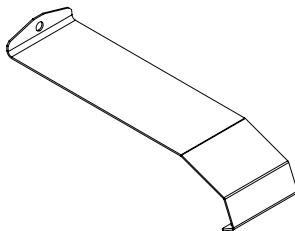
30-00100-02



FT14
Dodge Durango 2015+



30-00200-01



The flash patterns are listed in consecutive order of appearance. To select a certain flash pattern, start with a recognizable pattern and use the pattern changer wire to cycle through patterns.

Single Color Patterns: Cobra & Apollo

1. Cluster
2. Attack
3. Night Ride
4. Half-Half Slow
5. Half-Half Fast
6. One One Slow
7. One One Fast
8. Two Two Slow
9. Two Two Fast
10. All On Slow
11. All On Fast
12. In Out Slow
13. In Out Fast
14. Combo (4-6-8-10-12)
15. Combo (5-7-9-11-13)
16. Combo (4-5-6-7-8-9-10-11-12-13)

The flash patterns are listed in consecutive order of appearance. To select a certain flash pattern, start with a recognizable pattern and use the pattern changer wire to cycle through patterns.

Dual Color Patterns: Apollo only

Color 1:

1. Cluster
2. Attack
3. Night Ride
4. Half-Half Slow
5. Half-Half Fast
6. One One Slow
7. One One Fast
8. Two Two Slow
9. Two Two Fast
10. All On Slow
11. All On Fast
12. In Out Slow
13. In Out Fast
14. Combo (4-6-8-10-12)
15. Combo (5-7-9-11-13)
16. Combo (4-5-6-7-8-9-10-11-12-13)

Color 2:

18. Cluster
19. Attack
20. Night Ride
21. Half-Half Slow
22. Half-Half Fast
23. One One Slow
24. One One Fast
25. Two Two Slow
26. Two Two Fast
27. All On Slow
28. All On Fast
29. In Out Slow
30. In Out Fast
31. Combo (4-6-8-10-12)
32. Combo (5-7-9-11-13)
33. Combo (4-5-6-7-8-9-10-11-12-13)

Color 1 & 2:

34. Cluster
35. Attack
36. Night Ride
37. Half-Half Slow
38. Half-Half Fast
39. One One Slow
40. One One Fast
41. Two Two Slow
42. Two Two Fast
43. All On Slow
44. All On Fast
45. In Out Slow
46. In Out Fast
47. Combo (4-6-8-10-12)
48. Combo (5-7-9-11-13)
49. Combo (4-5-6-7-8-9-10-11-12-13)

Mode 1 starts on color 1 and 2

Mode 2 starts on color 1

Mode 3 starts on color 2